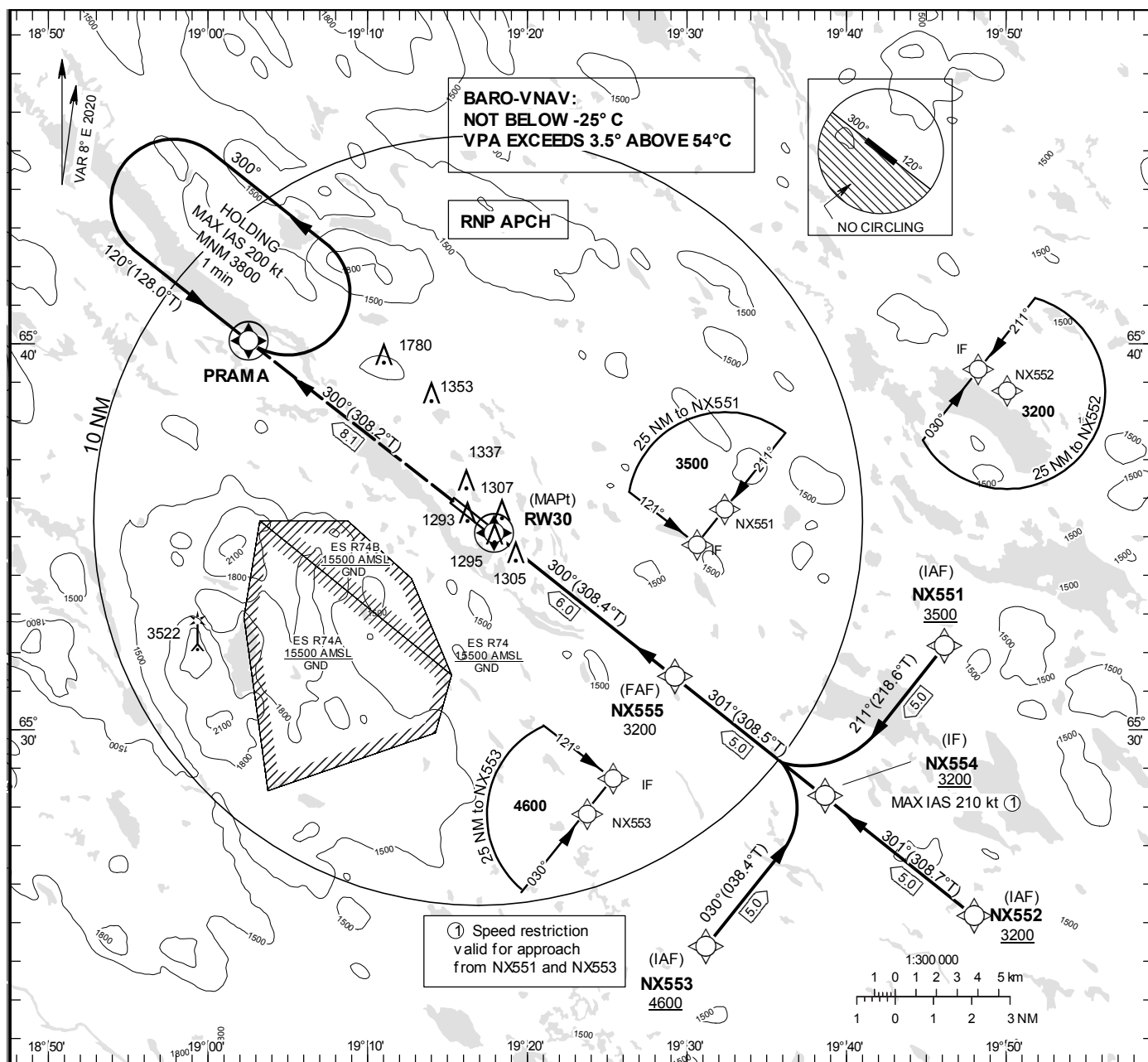


ARVIDSJAUR
RNP RWY 30

EGNOS Ch 78872 E30A

INSTRUMENT
APPROACH
CHART – ICAOTHR ELEV 1240.1 ft, AD ELEV 1245 ft
OCH are related to THR.
BRG are MAG (True).
ALT, HGT and ELEV in ft.ARVIDSJAUR
TOWER/INFORMATION

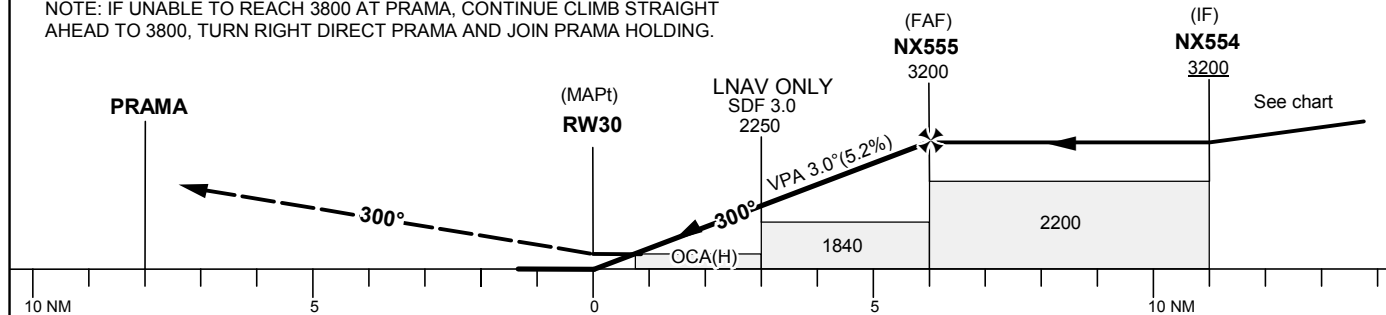
122.730



TA 5000 ft AMSL

RDH 50 ft

CLIMB TO PRAMA AND JOIN PRAMA HOLDING.
NOTE: IF UNABLE TO REACH 3800 AT PRAMA, CONTINUE CLIMB STRAIGHT AHEAD TO 3800, TURN RIGHT DIRECT PRAMA AND JOIN PRAMA HOLDING.



| OCA (H) | | | | | Final approach | Distance FAF-MAPt 6.0 NM | | | | | |
|-----------------|------------|------------|------------|------------|-----------------|--------------------------|------|------|------|------|------|
| Cat of ACFT | A | B | C | D | Dist to RW30 | 1 | 2 | 3 | 4 | 5 | 6 |
| LPV | 1423 (183) | 1435 (195) | 1446 (206) | 1456 (216) | ALT | 1610 | 1930 | 2250 | 2560 | 2880 | 3200 |
| LNNAV/VNAV | 1437 (197) | 1450 (210) | 1458 (218) | 1468 (228) | GS | kt | 80 | 100 | 120 | 140 | 160 |
| LNNAV | 1560 (320) | | | | Rate of descent | ft/min | 425 | 530 | 635 | 745 | 850 |
| Circling NE RWY | 1640 (400) | 1740 (500) | 2180 (940) | 2180 (940) | | | | | | | |

CHANGE: Editorial

ARVIDSJAUR

RNP RWY 30 via NX551

| Path Desc | Waypoint Identifier | Fly-over | Course °M(°T) | Dist (NM) | Turn Dir | Altitude | Speed | VPA/RDH | Rec Navaid | Navigation Specification |
|-----------|---------------------|----------|---------------|-----------|----------|----------|-------|---------|------------|--------------------------|
| IF | NX551 | - | - | - | - | +3500 | - | - | - | RNP APCH |
| TF | NX554 | - | 211°(218.6°) | 5.0 | - | +3200 | -210 | - | - | RNP APCH |

RNP RWY 30 via NX552

| Path Desc | Waypoint Identifier | Fly-over | Course °M(°T) | Dist (NM) | Turn Dir | Altitude | Speed | VPA/RDH | Rec Navaid | Navigation Specification |
|-----------|---------------------|----------|---------------|-----------|----------|----------|-------|---------|------------|--------------------------|
| IF | NX552 | - | - | - | - | +3200 | - | - | - | RNP APCH |
| TF | NX554 | - | 301°(308.7°) | 5.0 | - | +3200 | - | - | - | RNP APCH |

RNP RWY 30 via NX553

| Path Desc | Waypoint Identifier | Fly-over | Course °M(°T) | Dist (NM) | Turn Dir | Altitude | Speed | VPA/RDH | Rec Navaid | Navigation Specification |
|-----------|---------------------|----------|---------------|-----------|----------|----------|-------|---------|------------|--------------------------|
| IF | NX553 | - | - | - | - | +4600 | - | - | - | RNP APCH |
| TF | NX554 | - | 030°(038.4°) | 5.0 | - | +3200 | -210 | - | - | RNP APCH |

| Path Desc | Waypoint Identifier | Fly-over | Course °M(°T) | Dist (NM) | Turn Dir | Altitude | Speed | VPA/RDH | Rec Navaid | Navigation Specification |
|-----------|---------------------|----------|---------------|-----------|----------|----------|-------|----------|------------|--------------------------|
| IF | NX554 | - | - | - | - | +3200 | - | - | - | RNP APCH |
| TF | NX555 | - | 301°(308.5°) | 5.0 | - | @3200 | - | - | - | RNP APCH |
| TF | RW30 | Y | 300°(308.4°) | 6.0 | - | @1290 | - | -3.00/50 | - | RNP APCH |
| TF | PRAMA | Y | 300°(308.2°) | 8.1 | - | - | - | - | - | RNP APCH |

Holding PRAMA

| Path Desc | Waypoint Identifier | Fly-over | Course °M(°T) | Dist (NM) | Turn Dir | Altitude | Speed | VPA/RDH | Rec Navaid | Navigation Specification |
|-----------|---------------------|----------|---------------|-----------|----------|----------|-------|---------|------------|--------------------------|
| HM | PRAMA | Y | 120°(128.0°) | - | L | +3800 | -200 | - | - | RNP 1 |

FAS Data Block

RNP RWY 30

Input data

| | |
|-------------------------------------|---------------|
| Operation Type | 0 |
| SBAS Provider | 1 (EGNOS) |
| Airport Identifier | ESNX |
| Runway | 30 |
| Runway Letter | 0 (None) |
| Approach Performance Designator | 0 |
| Route Indicator | |
| Reference Path Data Selector | 0 |
| Reference Path Identifier | E30A |
| LTP/FTP Latitude | 653504.8805N |
| LTP/FTP Longitude | 0191755.5170E |
| LTP/FTP Ellipsoidal Height (metres) | 406.0 |
| FPAP Latitude | 653554.8010N |
| Delta FPAP Latitude (seconds) | 49.9205 |
| FPAP Longitude | 0191522.2190E |
| Delta FPAP Longitude (seconds) | -153.2980 |
| Threshold Crossing Height | 50.0 |
| TCH Units Selector | 0 (feet) |
| Glidepath Angle (degrees) | 3.00 |
| Course Width (metres) | 105.00 |
| Length Offset (metres) | 0 |
| HAL (metres) | 40.0 |
| VAL (metres) | 50.0 |

Output data

| | |
|----------------------|----------------------------------------------------------------------------------------------------------------------------------|
| Data Block | 10 18 0E 13 05 1E 00 00 01 30 33 05 61 59 25 1C 7A 39 48 08 DC 23 01 86 01 5C 52 FB F4 01 2C 01 64 00 C8 FA D4 1D 64 23 |
| Calculated CRC Value | D41D6423 |

Required Additional Data

| | |
|-------------------------------------|-------|
| ICAO Code | ES |
| LTP/FTP Orthometric Height (metres) | 378.0 |